

Product Bulletin

KLIXON

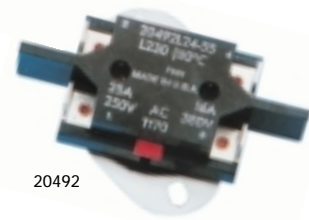
Fixed Temperature Thermostats

20490 and 20491 Series
Double Pole, Automatic reset

20492 and 20493 Series
Double Pole Manual Reset



20491



20492

Features

- **Double Pole Single Throw (DPST)**
- **Manual Reset/Trip free**
- **Automatic Reset**
- **Heavy Duty Capacity - up to 48 amperes per pole**
- **Snap-Action resists shock and vibration regardless of mounting position**
- **Tamperproof - temperatures are factory set to customer requirements**
- **Molded Phenolic Case - seals out lint, dust, and other contamination**
- **Compact - easily mounted where space is limited**
- **High Reliability**

Automatic Reset

The Klixon 20490 and 20491 series are especially designed for the electric heat, clothes dryer, and other major appliance markets. The high capacity automatic series, 20490 and 20491, are available as limit (L) switches, which open on temperature rise, and fan (F) switches, which close on temperature rise.

The switch is enclosed within a phenolic housing and stainless steel cup assembly which protects the contacts from contamination. The stainless steel cup also provides a variety of mounting configurations.

The switch mechanism is actuated by the KLIXON snap-action, bimetal disc, which may be enclosed or exposed. Enclosed disc types should

be used in all applications where response to radiant heat is not critical as it provides protection (to the bimetal element and switch assembly) against contamination and damage due to handling. Exposed disc types are used in applications where a faster thermal response to radiant heat is required.

Standardized mounting-hole dimensions allow interchangeability with our present 204 and 206 series thermostats.

The 20490 is available with the following terminal configurations: 0.250" X 0.032" flat, 45°, and 90° male quick connect; 0.187" X 0.032" 90° male quick connect; flat and 45° #8-32NC screw terminals. Only 45° #10-24 screw terminals are available on the 20491.

Temperature Setting (°F)

TEMP. RANGE	TOLERANCE		NOMINAL TEMP. DIFFERENCE
	OPEN	CLOSE	
0 to 80	±6	±7	20 to 60
81 to 200	±5	±7	20 to 60
201 to 250	±6	±8	20 to 60
251 to 300	±7	±10	30 to 60

Electrical Clearances

TYPE	THROUGH AIR	OVER SURFACE
20490	1/4"	3/8"
20491	3/8"	1/2"

Manual Reset

The KLIXON 20492 and 20493 series are especially designed for the electric heat and water heater markets. The high contact capacity eliminates the need for costly back-up contactors and low capacity manual reset limit controls in electric heat applications. The contacts are enclosed for protection from contamination.

The 20492 and 20493 are designed for trip free operation. The trip free construction will not allow the contacts to be closed until the temperature of the disc is lowered to its reset point.

The 20492 is available with the following terminal configurations: 0.250" X 0.032" flat, 45°, and 90° male quick connect; 0.187" X 0.032" 90° quick connect; flat and 45° #8-32NC screw terminals. Only 45° #10-24 screw terminals are available on the 20493.

Temperature Setting (°F)

OPENING TEMP. RANGE	TOLERANCE
100 to 200	±5
201 to 250	±6
251 to 300	±7

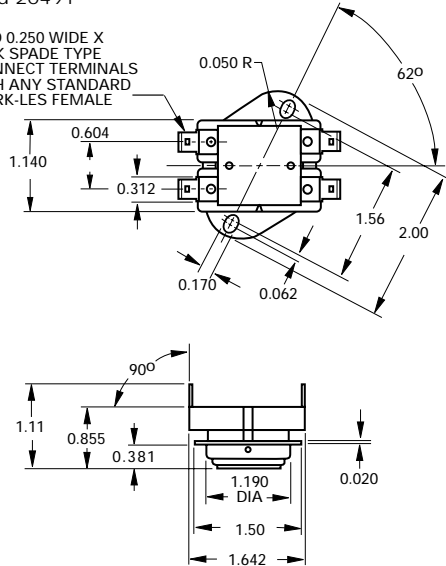
Minimum temperature differential is 40°F.

Electrical Clearances

TYPE	THROUGH AIR	OVER SURFACE
20492	3/8"	1/2"
20493	3/8"	1/2"

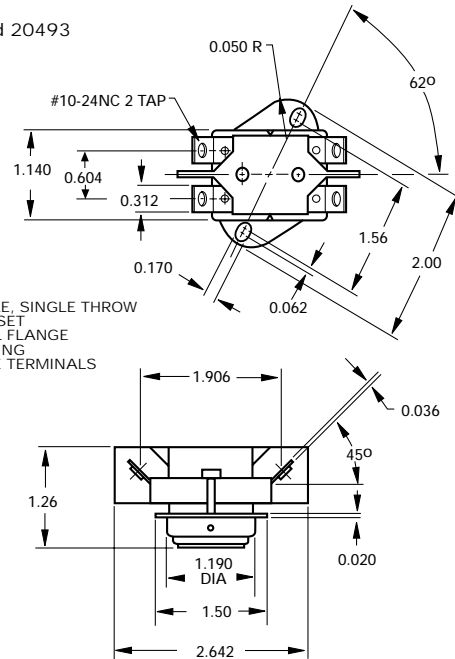
(All dimensions are in inches, unless otherwise noted.)
20490 and 20491

STANDARD 0.250 WIDE X
0.032 THICK SPADE TYPE
QUICK CONNECT TERMINALS
MATE WITH ANY STANDARD
AMP OR ARK-LES FEMALE
TERMINAL



DOUBLE POLE, SINGLE THROW
SMALL OVAL FLANGE
TOP MOUNTING
QUICK CONNECT TERMINAL

20492 and 20493



DOUBLE POLE, SINGLE THROW
MANUAL RESET
SMALL OVAL FLANGE
TOP MOUNTING
SCREW TYPE TERMINALS

Electrical Ratings Auto Reset

(100,000 cycles/pole)

20490*

Resistive	25 amperes at 240 V-ac
Motor Load	10 FLA-60 LRA at 120 V-ac 5 FLA-30 LRA at 240 V-ac
Pilot Duty	125 volt-amperes at 120 V-ac

20491*

Resistive	25 amperes at 600 V-ac
Motor Load	4 FLA-8 LRA at 480 V-ac
Pilot Duty	690 volt-amperes at 240 V-ac to 480 V-ac

*UL Recognized component for USA and Canada

File MP986
U.S. Category MBPR2
Canada Category MBPR8

Electrical Ratings Manual Reset

(6,000 cycles/pole)

20492*

Resistive	25 amperes at 600 V-ac
Motor Load	10 FLA-60 LRA at 120 V-ac 5 FLA-30 LRA at 240 V-ac
Pilot Duty	690 volt-amperes at 240/600 V-ac 480 volt-amperes at 120 V-ac

20493*

Resistive	48 amperes at 600 V-ac
Motor Load	16 FLA-96 LRA at 120 V-ac 8 FLA-48 LRA at 240 V-ac
Pilot Duty	690 volt-amperes at 240/600 V-ac 480 volt-amperes at 120 V-ac

Important Notice: Texas Instruments (TI) reserves the right to make changes to or to discontinue any product or service identified in the publication without notice. TI advises its customers to obtain the latest version of the relevant information to verify, before placing orders, that the information being relied upon is current.

Texas Instruments assumes no responsibility for infringement of patents or rights of others based on Texas Instruments applications assistance or product specifications since TI does not possess full access concerning the use or application of customers' products. Texas Instruments also assumes no responsibility for customers' product designs.

For further information write or call:

Texas Instruments Incorporated
Commercial Sensors & Controls
Thermal Controls Marketing
34 Forest Street, MS 23-10
Attleboro, MA 02703-0964
Phone: (508) 236-3192
(508) 236-1894
Fax: (508) 236-2349
or visit our website @: www.tisensors.com

A TI sales representative, who knows your temperature control problems and how our products solve them, is located close at hand. Use his services to eliminate needless engineering cost and give your products a competitive edge.